



JAPAN

YAMAGUCHI UNIVERSITY

National University



Contents

- 02 President's Message
- 03 Why Yamaguchi University
- 05 What Is Yamaguchi Prefecture like ?
- 07 Topics
- 09 Yamaguchi University by Numbers
- 10 Enrollment / Number of Staff
- 11 Our Partners
- 13 Inbound / Outbound
- 14 Research Activities
- 19 Faculties / Graduate Schools
- 20 Faculties
- 25 Graduate Schools
- 37 Student Life
- 43 International Student Center /
YU Campuses
- 45 Entrance Exam
- 46 Inquiries



The Charter of Yamaguchi University

I. Ideals and Goals

- 1 Creation of a "Place of Wisdom: Discover it, Nourish it, and Realize it"
- 2 Fostering the Spirit of Cooperation, Interactive Education, and Sharing
- 3 Respect for Fairness, Equality, and Fraternity

II. Goals of Education

- 1 Cultivation of Specialties and Adaptability to Society
- 2 Dedication to Self-Enlightenment, Self-Development, and Self-Management
- 3 Nurturing Human Resources to Respond the Needs of an Intelligent Society

III. Goals of Research

- 1 Dissemination and Application of Advanced Research for Social Utilization
- 2 Establishment of Interdisciplinary Research Systems
- 3 Conforming to the Visibility and Accountability of Research Activities

IV. Our Missions

- 1 Creation of New Values
- 2 Contribution to Solving Social Problems
- 3 Cooperation for the Development of Local and International Societies

President's Message

Together with Friends and Colleagues for Infinite Possibilities : Yamaguchi University



President
Yamaguchi University

TANIZAWA Yukio, MD, PhD

Yamaguchi University, composed of 9 faculties and 8 graduate schools, is the third oldest national university in Japan, tracing its roots back to Yamaguchi Kodo, a private school established in 1815. It celebrated its 200th anniversary in 2015. The local area still holds the spirit of the Meiji Restoration, and the university challenges itself to stand up in the world. These values are reflected in the university motto: "Discover it. Nourish it. Realize it. A Place of Wisdom." The university administration works to adapt to the requirements of the times, constantly pursuing innovation as it works to develop human resources and provide education and research that will contribute to the local community as well as international society.

The commitment to progress and innovation is evident in many of the recent changes in the university. April 2015 saw the establishment of the Faculty of Global and Science Studies. This new faculty has become a force for globalization throughout the campus, and recognizing the importance of this globalization, welcomed 100 international exchange students to the faculty in October 2016. In April 2016, the Graduate School of Technology and Sciences for Innovation started with a goal of encouraging comprehensive, innovative education and research in science, engineering, and agriculture to further develop graduate education in the sciences. In December 2019, the Joint Faculty of Veterinary Medicine acquired an Accreditation Status of certification from the European Association of Establishments for Veterinary Education (EAEVE). The faculty is the first EAEVE accredited institution in Asia and has been committed to establishing education system that meets international standards as well as enhancing educational contents.

It is a regret that recent Covid-19 pandemic has hampered international exchanges, we hope this problem is being resolved soon.

We believe that the diversity is a source of energy for creation, and Yamaguchi University is currently working toward a campus diversity so that the every students and faculty members, including international students and researchers who gather here from around the world can have the best possible environment for their studies and researches. In April 2011 we welcomed an International Student Advisor to campus, and building on this support for our international students, we started a tutor system where other students can also help provide both personal and academic support to those studying abroad in Yamaguchi. In 2016, the university started the Yamaguchi University Fund as part of a celebration of 200 years of history. This fund has allowed for further progress in providing support for international students. We at Yamaguchi University want the students and researchers who come to study with us to think of Yamaguchi as a second home, and be truly glad that they came here, and we will continue to improve our university and support system to make this possible.

Though some might not understand the appeal of Yamaguchi University because we are not in a large urban area like Tokyo or Osaka, we are proud to provide a peaceful and safe environment, high quality education and research, and a well-rounded support system, enabling students to study to their full potential. We invite you to come and pursue your dreams at Yamaguchi University. As the president of Yamaguchi University, and as an alumnus, I look forward to seeing ambitious students cooperating and creating a bright new future together.



Yamaguchi

4 Reasons to Choose



An Attractive Destination, The Ultimate Environment to Study

Yamaguchi University is located in Yamaguchi Prefecture, which is blessed with beautiful nature, cities and towns with a long history, a rich culture and a variety of sightseeing spots. We provide high quality education and the opportunity to engage in cutting-edge research, all in a peaceful and safe environment.



An Innovative Institution and International Leader

We have adapted to the requirements of the times and continue challenging ourselves to provide new value to the local community and the international society.



University ?

Yamaguchi University



Generous Support Provided for International Students and Foreign Researchers

We are cooperating with many organizations, including the International Student Advisors, professors from the International Student Center, staff from the International Student Support Office and tutors.



Well-Developed Career and Vocational Education

In our liberal core subjects, there are two career and vocational education courses. We also have unique lectures on the business culture of Japanese companies specifically designed for international students.



What Is Yamaguchi Prefecture Like?

Yamaguchi Prefecture is located on the western edge of Honshu Island and surrounded on three sides by the ocean. It is endowed with beautiful nature, cities and towns with a long history and a rich culture, and a number of sightseeing spots and hot springs.



Rurikoji temple

Rurikoji temple is known for its five-story pagoda. Built in 1442 and known as one of Japan's three greatest, the 31.2-meter pagoda was designated as a national treasure in 1903. It is strikingly beautiful during the cherry blossom season and snow season, and serves as a symbol of sightseeing in Yamaguchi.



Motonosumi Shrine

This shrine is dedicated to the deity of business prosperity, bountiful catch for fishermen, good relationships and marriages, child-bearing, and wish fulfillment. The tunnel of 123 torii gates spanning over 100 meters is indeed a marvelous sight.





Tsunoshima Bridge

With a breathtaking view of the cobalt blue sea spreading beneath it, the way the Tsunoshima Bridge blends in with the scenery has made it highly popular. Thanks to the stunning view, the bridge has often been used in films and TV commercials.



Akiyoshidai



Kintaikyo Bridge



Hot springs For Foot



Kawara soba

Topics



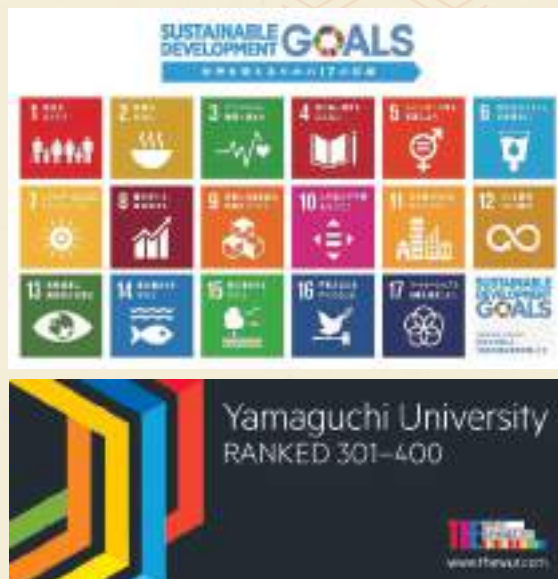
Promotion of SDGs

Yamaguchi University (YU) is ranked 301-400th (tied for 15th in Japan) in the overall ranking of "THE University Impact Ranking 2022" released on April 27 by the UK's magazine for higher education (THE: Times Higher Education).

YU is ranked within the top 100th in the world with 3 Goals. YU is tied for 68th in the world (5th in Japan) for "SDG2: Zero hunger", ranked 92nd in the world (9th in Japan) for "SDG14: Life below water", and 89th in the world (4th in Japan) for "SDG15: Life on land".

In addition, YU is ranked 101-200th in the world in 4 Goals such as "SDG13: Climate action" (2nd in Japan), and received high evaluation in many Goals.

At Yamaguchi University, faculty and staff will continue to actively cooperate to achieve the SDGs through education, research and social contributions.



FAVO, a Symbol of Diversity, has Opened

FAVO opened in October 2019 in the center of the Yoshida Campus as a place where students come, meet, talk freely and can interact with one another, regardless of nationality or course of study.

FAVO comes from the word "favorite", and was named by a student. Halal food and warm bento lunches are served at the café. Support for the needs of international students is offered throughout FAVO, such as support provided in English at the Life Support Center.





Uni E'terna Yamaguchi Yoshida Student House Opens

Uni Eterna Yamaguchi Yoshida Student House opened on Yoshida Campus in March 2021. This 5-story living facility with 123 apartments has separate floors exclusively for men and women. The furnished apartments come with household appliances and Wi-Fi. There is an emphasis on security, including an auto lock in the common area and monitor-equipped intercoms in the apartments that are connected to a 24-hour support center. The building also has a store, community space, and meal service that can be used with a meal card. Various rental services are also available, such as rental bicycles.

Having furniture and household appliances provided from the start is a convenient service for students in the Faculty of Engineering and Faculty of Medicine and Health Sciences who move to Ube from their second year after studying the core curriculum in their first year on Yoshida Campus in Yamaguchi City, and for students in the Faculty of Global and Science Studies whose curriculum includes long-term overseas study.



Renovations on the Medical Library and Engineering Library are complete

In July 2021, renovation work was completed on the Medical Library on Kogushi Campus and the Engineering Library on Tokiwa Campus.

The interior of the Medical Library now has wooden louvers that convey an atmosphere of warmth and tranquility, offering visitors a calm space. In addition, the library has enhanced functionality with an IT lounge, a group work area, and a relaxation lounge where eating and drinking is permitted.

The Engineering Library has an eco-friendly, modern atmosphere featuring brick (rose-colored brick) distinctive to Ube, a city that prospered as a coal-mining town, in the waist-high partition wall at the reception counter and the lawn of the outside wood deck. There is also a new café.

In addition to collecting and preserving books and archival materials, and sharing them with users to contribute to the respect and development of cultures, the roles and functions of a library today have developed to include the provision of a place for interactive dialogue and communication.

These libraries are anticipated to be utilized by many and serve as a place for learning and interaction for everyone.



Yamaguchi University by Numbers

Year Founded



1815

3

Campuses

Yoshida Campus
Kogushi Campus
Tokiwa Campus



9

Faculties

Faculty of Humanities
Faculty of Education
Faculty of Economics
Faculty of Science
Faculty of Medicine and Health Sciences
Faculty of Engineering
Faculty of Agriculture
Joint Faculty of Veterinary Medicine
Faculty of Global and Science Studies



Undergraduate Students

8,546

*Numbers in parentheses indicate international students included in the total 88



8

Graduate Schools

Graduate School of Humanities
Graduate School of Education
Graduate School of Economics
Graduate School of Medicine
Graduate School of Sciences and
Technology for Innovation
Graduate School of East Asian Studies
Graduate School of Innovation and
Technology Management
Joint Graduate School of Veterinary Medicine



Graduate School Students

1,473

*Numbers in parentheses indicate international students included in the total 203



Overseas Academic Exchange Partner

6

Overseas Offices

International Collaboration Office, Shandong, China
International Collaboration Office, Bali, Indonesia
International Collaboration Office, Taiwan
International Collaboration Office, Kuala Lumpur, Malaysia
International Collaboration Office, Bangkok, Thailand
International Collaboration Office, Ha Noi, Vietnam



174



Enrollment



Faculties

(As of May 1, 2022)

Faculties	Current Enrollment
Faculty of Humanities	804
Faculty of Education	766
Faculty of Economics	1,477
Faculty of Science	925
Faculty of Medicine and Health Sciences	1,201
Faculty of Engineering	2,336
Faculty of Agriculture	424
Joint Faculty of Veterinary Medicine	195
Faculty of Global and Science Studies	418
Total	8,546



Graduate Schools

(As of May 1, 2022)

	Current Enrollment	
	Masters Program	Doctoral Program
Graduate School of Humanities	17	-
Graduate School of Education	50	-
Graduate School of Economics	58	-
Graduate School of Medicine	28	163
Graduate School of Sciences and Technology for Innovation	893	124
Graduate School of East Asian studies	-	43
Graduate School of Innovation and Technology Management	39	-
United Graduate School of Veterinary Science	-	9
Joint Graduate School of Veterinary Medicine	-	49
Total	1,085	388
United Graduate School of Agricultural Sciences, Tottori University	-	91

Number of Staff

(As of May 1, 2022)

	Professors	Associate Professors	Assistant Professors	Research Associates	Others	Total
Faculties	113	116	11	0	679	919
Graduate Schools	166	166	86	7	195	620
University Hospital	0	54	102	0	1,605	1,761
Animal Medical Center	0	1	1	0	20	22
Organization for Education and Student Affairs	4	8	5	0	65	82
Organization for Research Initiatives	7	7	7	0	71	92
Center for Information Infrastructure	1	3	0	0	0	4
Archaeological Museum	0	0	2	0	0	2
Research Institute for Time Studies	2	3	0	0	5	10
Community Future Center	0	0	0	0	6	6
Center for Teacher Education	0	0	0	0	5	5
Center for Information and Data Science Education	0	1	0	0	0	1
Others	0	0	0	0	457	457
Total	293	359	214	7	3,108	3,981

Our Partners

Total 174

Academic Exchange Agreements (International)

○...University-wide
●...Faculty-level

As of May 1, 2022

Asia

Bangladesh

- Institute of Food and Radiation Biology, Atomic Energy Research Establishment
- Faculty of Biological Science, Jahangirnagar University
- Faculty of Veterinary Science, Bangladesh Agricultural University

China

- Shandong University
- Beijing Normal University
- Wuhan University of Technology
- Guizhou University
- Chongqing University of Technology
- Capital Normal University
- Jiangsu University
- Dalian University of Foreign Languages
- Xi'an Jiaotong University
- Hong Kong Shue Yan University
- The Education University of Hong Kong
- Liaoning Normal University
- Zhejiang Sci-Tech University
- Huzhou University
- Dalian University of Technology
- School of Information Science and Engineering, Fudan University
- Dalian Medical University
- School of Environmental Science and Engineering, Shanghai Jiao Tong University
- Xihua University
- Center for Japanese Studies, Fudan University
- College of Foreign Languages, Shandong Agricultural University
- Jinjiang College, Sichuan University
- Center for Japanese Studies, Fudan University

India

- National Institute of Technology, Kurukshetra
- Department of Economics, University of Calcutta
- Faculty of Commerce, Social Welfare and Business Management, University of Calcutta

Indonesia

- University of Brawijaya
- Gadjah Mada University
- IPB University
- University of Udayana
- Bandung Institute of Technology
- Directorate General of Fiscal Balance, Ministry of Finance
- University of Indonesia
- Geospatial Information Agency
- Syarif Hidayatullah State Islamic University Jakarta
- Universitas Sebelas Maret
- Faculty of Medicine, Islamic University of Malang
- Faculty of Agriculture, Islamic University of Malang
- Faculty of Engineering, Islamic University of Malang
- Faculty of Engineering, Riau University
- Center of Data, Information and Public Relations, National Disaster Management Agency
- Faculty of Veterinary Medicine, Airlangga University

Sri Lanka

- Department of Agriculture, Sri Lanka & Postgraduate Institute of Agriculture, University of Peradeniya

Korea

- Inha University
- Kongju National University
- Hankuk University of Foreign Studies
- Gyeongsang National University
- University of Seoul
- Changwon National University
- Seoul National University
- Ajou University
- Ewha Womans University
- Kunsan National University
- Busan University of Foreign Studies
- Jeonbuk National University
- Chungbuk National University
- Radio Astronomy Division, Korea Astronomy and Space Science Institute
- College of Railroad and Transportation, Woosong University
- School of Nursing and school of Health Sciences, Cheju Halla University

Laos

- National University of Laos

Malaysia

- University Malaysia Sarawak
- University of Technology, Malaysia
- University of Kuala Lumpur
- University of Technology MARA
- Petronas Technological University
- University Putra Malaysia
- Universiti Tun Hussein Onn Malaysia

Philippines

- Regional Integrated Coastal Resource Management Center-Region XI of the Davao Oriental State University

Mongolia

- Institute of Veterinary Medicine, Mongolian State University of Life Sciences
- School of Engineering and Applied Sciences, National University of Mongolia
- School of Arts and Sciences, National University of Mongolia

Taiwan

- National Chung Hsing University
- Tunghai University
- Feng Chia University
- Da-Yeh University
- Providence University
- Kainan University
- National Kaohsiung Normal University
- Tamkang University
- National Kaohsiung University of Hospitality and Tourism
- College of Medicine, National Taiwan University
- College of Liberal Arts, Tamkang University
- School of Liberal Arts and Social Sciences, Soochow University
- College of Science, National Taiwan Normal University
- College of Science, National Taiwan University

Thailand

- Kasetsart University
- Prince of Songkla University
- Khon Kaen University
- Chiang Mai University
- Srinakharinwirot University
- Agricultural Research Development Agency
- Chulalongkorn University
- King Mongkut's Institute of Technology Ladkrabang
- Faculty of Nursing, Mahidol University
- School of Bioresources and Technology, King Mongkut's University of Technology Thonburi
- Faculty of Technology and Community Development, Thaksin University
- Faculty of Agricultural Production, Maejo University
- Faculty of Agro-Industrial Technology, Rajamangala University of Technology Tawan-ok
- School of Science, Mae Fah Luang University
- Faculty of Engineer and Industrial Technology, Silpakorn University
- Institute of Agricultural Technology, Institute of Science, Suranaree University of Technology

Vietnam

- Can Tho University
- Vietnam National University of Agriculture
- International University - Vietnam National University in Ho Chi Minh City
- Hanoi National University of Education
- Eastern International University
- University of Science and Technology, The University of Danang
- National Institute of Animal Science, Ministry of Agriculture and Rural Development
- Hue University of Sciences, Hue University

Myanmar

- Yezin Agricultural University

Nepal

- Faculty of Animal Science, Veterinary Science and Fisheries, Agriculture and Forestry University
- The Nepal Administrative Staff College

Middle East

Turkey

- College of Engineering and Natural Sciences, Istanbul Sehir University
- Faculty of Economics, Administrative and Social Sciences, Kadir Has University

universities/ institutions in 36 countries/ region



Europe

Denmark

- University of Southern Denmark

France

- The University of Lille
- Lille Catholic University
- The University of Bordeaux

Germany

- Friedrich-Alexander University Erlangen-Nuremberg
- Hof University of Applied Sciences
- Beuth University of Applied Sciences Berlin

Hungary

- Eotvos Lorand University
- Károli Gáspár University of the Reformed Church in Hungary

Lithuania

- Vytautas Magnus University

Africa

Kenya

- Faculty of Veterinary Medicine, University of Nairobi

Pacific

Australia

- University of Newcastle
- University of Technology Sydney
- UWA Institute of Agriculture, University of Western Australia

New Zealand

- New Zealand Institute for Plant & Food Research Limited
- School of Accounting, Finance, and Economics, The University of Waikato

Netherlands

- Centre for Genetic Resources, the Netherlands (CGN)

Portugal

- Faculty of Science and Technology, New University of Lisbon

Russia

- M.V. Lomonosov Moscow State University
- MIREA - Russian Technological University
- Russian State Agrarian University – Moscow Timiryazev Agricultural Academy
- Kazan State Medical University

Spain

- University of Zaragoza
- Autonomous University of Barcelona
- Jaume I University
- School of Industrial Engineering and Telecommunications, University of Cantabria

Ukraine

- Ivan Franko National University of Lviv

United Kingdom

- University of Sheffield
- University College London
- University of Central Lancashire
- The University of Edinburgh
- University of Bath
- Faculty of Engineering, University of Bristol

North America

Canada

- University of Regina
- Memorial University of Newfoundland

United States of America

- University of Oklahoma
- University of Hawai'i at Hilo
- California State Polytechnic University, Pomona
- University of Central Florida
- Fitchburg State University
- Manhattanville College
- East-West Center
- University of Hawai'i Kaua'i Community College
- University of Hawai'i Kapi'olani Community College
- Northern Arizona University
- Elgin Community College
- City of Hope
- The University of Kansas Medical Center, The University of Kansas

Latin America and the Caribbean

Argentina

- Faculty of Science, National University of La Plata
- Faculty of Exact, Chemical and Natural Science, National University of Misiones

Brazil

- University of São Paulo
- Pontifical Catholic University of São Paulo


Chile


- University of Concepcion


Peru


- La Molina National Agrarian University
- National University of San Marcos
- Saint Ignatius of Loyola University
- National Institute of Civil Defense (INDECI)

List of Overseas Offices Yamaguchi University International Collaboration Office

 **China**
Shandong University 27 Shanda Nanlu, Jinan, 250100 P.R. CHINA

 **Malaysia**
Malaysia-Japan International Institute of Technology (MJIT), Universiti Teknologi Malaysia Kuala Lumpur Jalan Sultan Yahya Petra, 54100 Kuala Lumpur, MALAYSIA
<https://www.facebook.com/YUICOKualaLumpur/>

 **Indonesia**
Udayana University Jl.P.B Sudirman Campus Post Graduate Bldg. (3rd Floor) Gedung FISIP 2F Denpasar Bali INDONESIA
https://yamaguchi.unud.ac.id/?page_id=144&lang=en

 **Thailand**
Department of Microbiology, Faculty of Science, Kasetsart University, 50 Ngam Wong Wan Rd., Ladyao Chatuchak Bangkok 10900, Thailand
<https://www.facebook.com/yuicobkk/>

 **Taiwan**
Da-Yeh University 168 University Rd., Dacun, Changhua 51591, TAIWAN, R.O.C.
<http://yuicot.dyu.edu.tw/>

 **Vietnam**
Vietnam National University of Agriculture (VNUA), Trau Quy, Gia Lam, Ha Noi, Viet Nam

Inbound

International Students



■ Human. : Humanities ■ Educ. : Education ■ Econ. : Economics ■ Sci. : Science ■ Med. : Medicine and Health Sciences ■ Eng. : Engineering ■ Agr. : Agriculture
 ■ Vet. : Veterinary ■ Glob. : Global and Science ■ Sci.&Tech. : Sciences and Technology for Innovation ■ East Asian. : East Asian Studies
 ■ Inn. : Innovation and Technology Management ■ Joint Vet. : Joint Faculty (Graduate School) of Veterinary Medicine

(As of May 1, 2022)

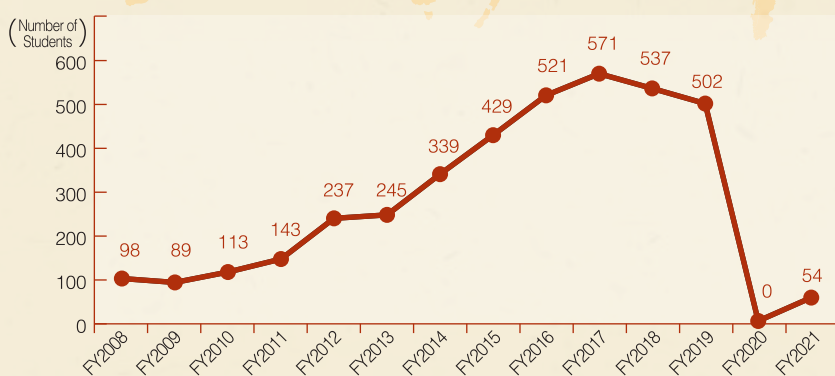
Classification Countries and Areas	Faculties								Graduate Schools							Other	Total	Graduate Schools Doctoral Program Agr.	
									Master's Program				Doctoral Program						
	Human.	Econ.	Sci.	Med.	Eng.	Agr.	Joint Vet.	Glob.	Human.	Econ.	Sci. & Tech.	Inn.	East Asian.	Med.	Sci. & Tech.				Joint Vet.
Asia	5	12	1	1	66	1	1	1	9	46	45	10	28	9	29	19	60	343	2
Pacific	0	0	0	0	0	0	0	0	0	0	0	1	0	0	0	0	0	1	0
North America	0	0	0	0	0	0	0	0	0	0	0	0	0	0	0	1	1	2	0
Latin America and the Caribbean	0	0	0	0	0	0	0	0	0	0	0	0	0	0	0	2	1	3	0
Europe	0	0	0	0	0	0	0	0	0	0	0	0	0	0	0	0	3	3	0
Middle East	0	0	0	0	0	0	0	0	0	0	0	0	0	0	0	1	0	1	0
Africa	0	0	0	0	0	0	0	0	0	0	0	1	1	0	1	0	11	14	0
Total	5	12	1	1	66	1	1	1	9	46	45	12	29	9	30	23	76	367	2

Outbound

Students Studying Abroad from Yamaguchi University

(FY2021)

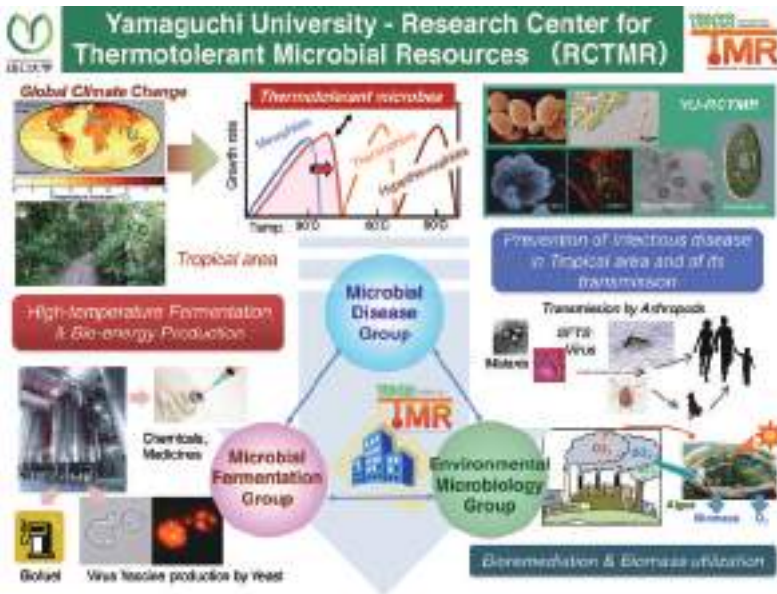
Areas	Number of Students
Asia	23
Oceania	0
North America	10
Latin America and the Caribbean	0
Europe	21
Other Areas	0
Total	54



※Due to COVID-19 outbreak, YU banned students from studying abroad in 2020.

Research Activities

Research Center for Thermotolerant Microbial Resources (RCTMR)



Microbial research has become crucial in view of global problems such as climate change and widespread drought, expansion of infectious diseases, increased waste, and the need for new energy sources such as biofuels. In order to solve or mitigate these problems, it has been proposed that thermotolerant microorganisms be utilized, which are mesophilic microorganisms capable of growing at higher temperatures, as well as semi-thermophilic functional microorganisms. In addition, there is a need for the detection and regulation of pathogenic microorganisms, the outbreak of which is expected under climate change conditions, in line with further developments of interdisciplinary microbiology. Against this background, our research center, RCTMR, was established in September 2009, and has since been tackling issues related to climate change and its critical influence on human life by utilizing the potential of microbes to establish a novel research and study field with an integrated viewpoint consisting of fermentative, environmental, and pathogenic microbiology, and to undertake pioneering studies and education.

Research Center for Regenerative and Cell Therapy



"Research Center for Regenerative and Cell Therapy" certified in 2016 aims to establish liver regenerative therapy and cancer immune-cell therapy, with challenges to develop and commercialize the technologies on cell culture necessary for the therapies. Liver regeneration unit provides "Autologous bone marrow cell infusion therapy (ABMi)" for liver cirrhosis and authorized as the advance medical care B in Japan, and developing "Less invasive liver regenerative therapy using cultured autologous BM cells". Cancer immune-cell therapy unit has been focusing on an original CAR T-cell therapy indicating efficacy on solid cancers, which the other CAR T-cell approaches have not succeeded yet. Additional challenges are in developing automated cell culture devices for medical purposes and in fostering the clinical embryologists in our graduate professional course, the first embryologist course in Japan. Through the activities, the center also wishes to contribute in vitalizing local economy.

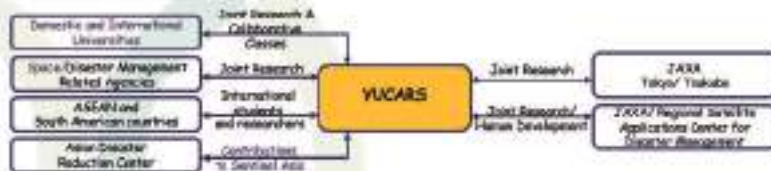
Research Activities



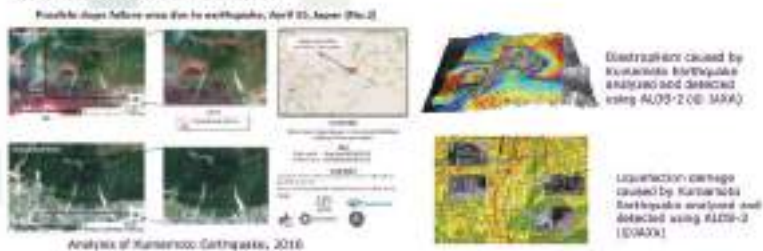
Center for Research and Application of Satellite Remote Sensing (YUCRAS)



Center for Research and Application of Satellite Remote Sensing (YUCRAS)



YUCRAS research results:



Yamaguchi University (YU) and the National Udayana University in Indonesia (UNUD) have started international collaborative education and research to apply the satellite remote sensing data to disaster management and environmental issues from 2005. Concurrently, international joint research has been pursued in collaboration with other universities inside and outside of Indonesia as well as some national research institutes. In 2016, it was decided that JAXA's research center would come to Yamaguchi Prefecture, and this excellent decision was positively influenced by our great collaboration activities and achievements.

JAXA's new research center started in 2017 February, and our YUCRAS started the deep collaboration work with JAXA together. We can utilize JAXA's satellite data, and to pursue our international research on the disaster management, environmental issues, and future space business' opportunities. We will expand the new collaboration opportunities in not only Asia but also South America, Europe and other areas of the world as well.



Yamaguchi University Biomedical Engineering Center (YUBEC)



Yamaguchi University Biomedical Engineering Center (YUBEC)

In 2001, Biomedical Engineering Division was established at Graduate School of Medicine. In 2014, YUBEC was established as one of the university's research centers of excellence. Currently, about 40 researchers from various academic fields including basic and clinical medicine, natural sciences and engineering are working for YUBEC based on industry-academia-government collaborations.



Interdisciplinary & multi-organizational collaborations to make the research outputs for practical use



"Medical Engineering" is the keyword to create the society, where our healthy life is maintained. In 2001 Yamaguchi University established the first Medical Engineering Department in Graduate School of Medicine in Japan. Based on the knowledge obtained at this department Yamaguchi University Biomedical Engineering Center was established in 2014 with researchers from various academic fields and industry-academia-government collaboration. As the human body is composed of organic/inorganic materials and regarded as a highly sophisticated machine, engineering analysis of the human body will enable us to develop new, efficient drugs, diagnostic techniques and medical devices. YUBEC will contribute greatly to our prosperous future through the research and development in biomedical engineering.

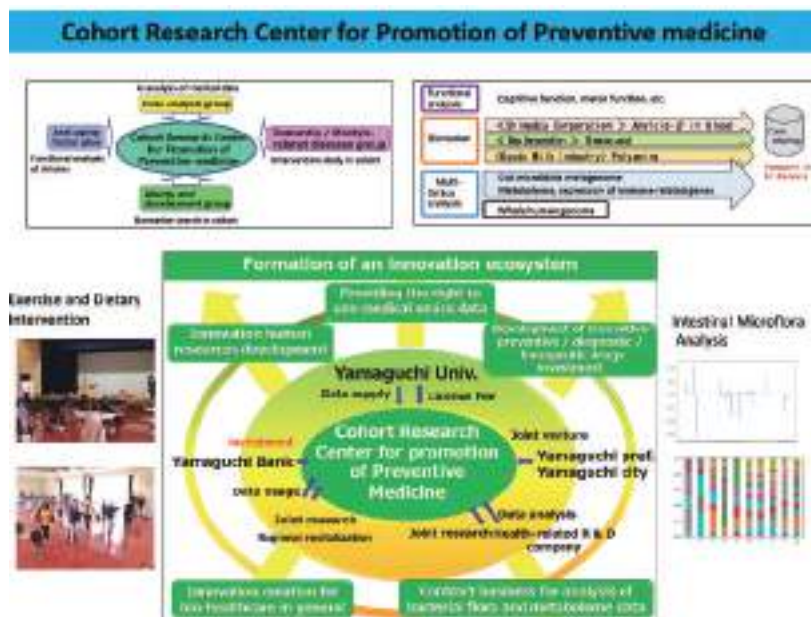
Cohort Research Center for Promotion of Preventive Medicine



The purpose of the Cohort Research Center for the Promotion of Preventive Medicine is to realize prevention, early detection, and early treatment of aging-related diseases and lifestyle-related diseases through a system of industry-academia-government. The center aims to identify biomarkers for detecting diseases in the unaffected stage, and to prevent or treat the onset of these diseases at an early stage.

What is unique about this center is its intervention research and multi-omics analysis. In addition to the usual blood biochemistry data, multi-level analysis will be conducted, including whole genome, intestinal bacteria, and metabolites. The multi-omics data are then compared before and after interventions such as exercise and dietary guidance to identify new biomarkers. To perform such multilevel analysis, we have established a system consisting of AI analysis, epidemiological investigation, and clinical departments.

Since there is still no institute that analyzes changes before and after intervention for such multilevel data, we can expect to discover new biomarkers.



Decoding the mechanisms of cancer cell growth for development of effective cancer treatment

Our research group aims to establish a "Research center for innovative cancer treatment" by integrating basic and clinic research, with a focus on medicine and veterinary medicine. We will identify new therapeutic targets for cancer, elucidate molecular mechanisms of cancer cell growth, and validate chemical compounds that could be potential drugs. In addition, we aim to identify new biomarkers for diagnosis, prognosis and prediction of treatment outcome. With industrial-academia-government cooperation and international collaborations, we wish to discover innovative therapeutic strategies for cancer in order to improve survival and quality of human life.

Blue Energy center for SGE Technology (BEST)

Recently, Paris agreement rapidly promotes implementations of renewable energy such as solar and wind powers to decrease CO₂ emission immediately. Therefore, in addition to solar and wind energies, versatile renewable energy supplying system with high social energy security and diversity, according to 5th basic plan on energy supply and demand in Japan, is still required. In Yamaguchi University, a new center called as "Blue Energy center for SGE Technology (BEST)" has been established in July, 2018. This center focuses on salinity gradient energy (SGE), generated when mixing two solutions with different salinities such as seawater and river water. BEST center has developed SGE-based innovative technologies such as SGE harvesting system by membranes and SGE-based production of useful fuels such as H₂ by electrolysis, promising to be useful for Yamaguchi since Yamaguchi is an innovative prefecture about H₂ applications.

Research Activities



Research Center of Environmental DNA

Research Center of Environmental DNA aims to develop fundamental analytical technologies for environmental DNA (eDNA), build utilization system using big data analysis and bioinformatics for eDNA, and promote application of eDNA in various academic fields. The center consists of "Method Development Division", "Bioinformatics Division", "Medical / Sanitary Application Division", "Ecological (Engineering) Application Division" and "Fisheries (Engineering) Application Division". Researchers from ecology, fishery science, medicine, engineering gather together to establish the analytical techniques using eDNA and conduct world-leading eDNA research.



Research center for infectious diseases and drug discovery

Established in 2019 with the aim of developing new control methods for infectious diseases and drug discovery. With the increase in traffic and distribution of people, the invasion of infectious diseases, which have not been regarded as a problem, is feared. Most of them are infectious diseases originating from infected people, animals or foods overseas, and it is important to promote research on zoonotic diseases by linking medicine and veterinary medicine. This research integrates the infection model that each researcher has accumulated independently through the activities of the Research Center for Thermotolerant Microbial Resources for many years, and creates a One Health-based collaboration between medicine and veterinary medicine. Elucidation of infection mechanisms using human organoids (human organ-like cultured tissues), macrophages, and genetically modified mice, and elucidation of symbiotic mechanisms using natural host models such as paramecium, ticks, and silkworms.



International Nano-theranostics Center

Recently, the development of new anticancer drugs has been active, but there are refractory tumors for which there is still no effective treatment. To overcome refractory tumors, we will create innovative medicine "Theranostics" by integrating diagnosis and therapeutics. Utilizing the proprietary organosilica nanoparticle technology (international patent granted), we will promote research and development internationally with the cooperation between the medical school and the joint veterinary school. In order to realize theranostics, this research has imaging and therapeutic functions (phototherapy and drug delivery of anticancer drugs, etc.), enhances the accumulation in cancer tissues, and becomes the basis for clinical development. In addition to these academic developments to create theranostics (core) particles, we will promote internationalization centered on collaboration with the United States Southern California Institutes and promote human resource exchange with a focus on young researchers. Furthermore, with the aim of translation to business, we will promote the commercialization of fluorescent nanoparticles, cell fluorescent nano-labeling technology, and multimodal imaging nanoparticles, as imaging reagents, and start sales in Japan and international.



Center for Local Disaster Prevention and Mitigation

There are risks of landslides on the mountainside, flooding along rivers, storm surges and tsunamis near the sea, and new risks of COVID-19 in local cities such as Ube City. Therefore, the mission of our center is to protect people from natural disasters and present measures for the sustainable development of the city while preventing infectious diseases such as the new coronavirus. The center is composed of six divisions. The center aims to solve problems such as disaster prevention, medical care, and infectious diseases in local cities with a declining birthrate and an aging population, and to propose the sustainable urban society model "New Ube-method" modeled on Ube City. Finally, we aim to be the research center that strengthens society against natural disasters and epidemics.



Creation of basic technologies to improve plant robustness against environmental changes

The objective of this research project is to develop basic technologies for designing and producing plants with improved robustness to environmental changes through understanding the mechanisms of plant environmental response and adaptation at the molecular level. This project aims to contribute to the achievement of the Sustainable Development Goals (SDGs) against global environmental change by promoting basic and applied research through collaboration between researchers with different expertise and resources of plant robustness research.




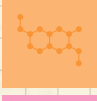















Research Institute for Time Studies



The Research Institute for Time Studies (RITS) aims to study time and related phenomena from various points of view, with a goal of initiating a new interdisciplinary research field, "Time Studies." In order to cover a wide range of time studies, we have concurrent staff members and visiting professors participating in the activities of the institute in addition to the full-time faculty members of RITS. Research seminars of various fields are regularly held and the results are published on journals. In 2021, a research project entitled 'Time studies of the COVID-19 epidemic' was carried out, and 19 researchers of various research fields conducted intensive research on subjects related to COVID-19. RITS also publish books such as "An Introduction to Time Studies" and "Construction of Time Studies" aiming at systematization of time studies. Academic symposiums and open lectures for the public to promote the time studies are also held every year.

Faculties / Graduate Schools

		Program years
	Faculty of Humanities	4
	Faculty of Education	4
	Faculty of Economics	4
	Faculty of Science	4
	Faculty of Medicine and Health Sciences	School of Medicine 6 School of Health Sciences 4
	Faculty of Engineering	4
	Faculty of Agriculture	4
	Joint Faculty of Veterinary Medicine	6
	Faculty of Global and Science Studies	4

		Program	Years	Degree name
	Graduate School of Humanities	Masters	2	Arts
	Graduate School of Education	Masters	2	Education
		Professional Degree	2	
	Graduate School of Economics	Masters	2	Economics
	Graduate School of Medicine	Doctoral I	2	Health Sciences in Nursing, Laboratory Sciences
		Doctoral II	3	Philosophy in Health Sciences
		Doctoral	4	Philosophy
	Graduate School of Sciences and Technology for Innovation	Masters	2	Science in Agricultural Sciences, Science in Life Sciences
		Doctoral I	2	Science, Engineering, Science in Agricultural Sciences, Science in Life Sciences, Philosophy
		Doctoral II	3	Science, Engineering, Medical Engineering Science, Life Science, Philosophy
	Graduate School of East Asian Studies	Doctoral	3	Philosophy
	Graduate School of Innovation and Technology Management	Professional Degree	2	Technology Management
	Joint Graduate School of Veterinary Medicine	Doctoral	4	Veterinary Science
	United Graduate School of Agricultural Sciences, Tottori University	Doctoral	3	Agriculture

Faculties



Faculty of Humanities

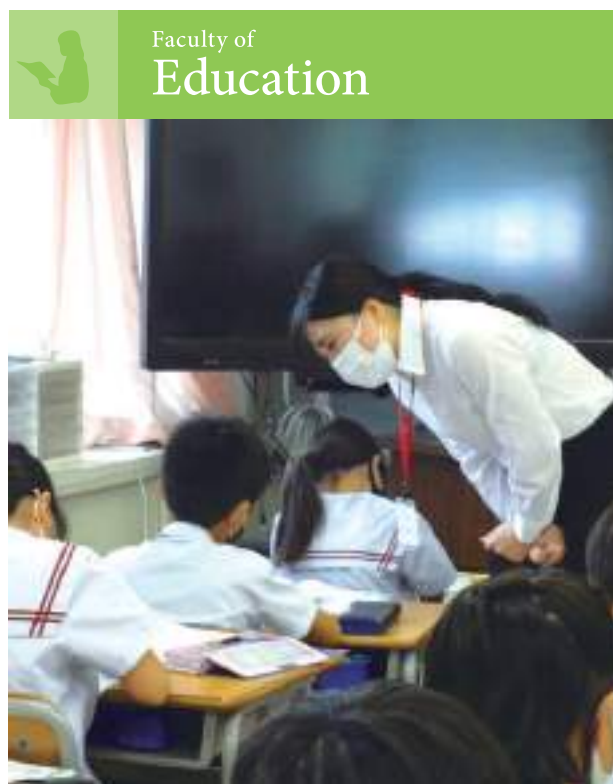
Specialized Fields

Department	Courses
Humanities	Philosophy, History, Sociology, Japanese and Chinese Languages and Literature, European and American Languages and Literature

Characteristics of Educational Contents

The Department of Humanities encourages students to ponder the nature of humankind, examine history in detail, research current social affairs in depth, analyze languages and study literature from the East and the West, and enrich esthetic appreciation. There are twenty specialized areas as listed below and each equips students with specific knowledge and skills:

Western Philosophy, History of Oriental Thought, Aesthetics & Art History, Religion, Japanese History, Oriental History, Western History, Archaeology, Contemporary Sociology, Social Psychology, Folklore & Cultural Anthropology, Japanese Linguistics, Japanese Literature, Chinese Linguistics, Chinese Literature, English Linguistics, English Literature, European Languages & Comparative Linguistics, European Literature & Comparative Literature, Linguistics



Faculty of Education

Specialized Fields

Programs in Preschool and School Education	
Unit of Elementary School Education	Elementary School, Education, Psychology, International Understanding
Unit of Preschool Education	
Unit of Education for Children with Special Needs	
Unit of Education for Information Studies	
Unit of Curriculum and Instruction Studies	Japanese Language and Literature, Social Studies, Mathematics, Science, Music, Art, Physical and Health, Crafts and Technology, Home Economics, English

Characteristics of Educational Contents

Many of the lectures and laboratory classes are held in small groups. This, together with the practice teaching and extracurricular activities helps students to develop high expertise and provides them with good teaching skills. Teaching skill and diverse expertise, collaborating together, creates good opportunities for the students to gain a broader perspective in the study field and rich culture. Many seminars and training camps are held, designed to cultivate in students the skills to work in team with their fellow-students and children.



Faculties



Faculty of
Economics

Specialized Fields

Department	Courses and Program
Economics	Public Administration
Management	Business and Law Professional Accountant
Tourism and Travel Industry Policy	Tourism Economy Tourism Communication

Characteristics of Educational Contents

The faculty tackles educational research from the stance: "Generate questions about social phenomena, formulate policies to provide solutions and contribute to a rich structure of society," aiming to cultivate human resources and students who can contribute to the community.

Since the old days, Yamaguchi has been an active center for transportation and distribution of goods, producing a wide variety of prosperous industries in agriculture, forestry, fishing, heavy industry and tourism. Yamaguchi has a wealth of resources and quests for you to explore and discover. We hope you will open the door to your future.



Faculty of
Science

Specialized Fields

Departments	Courses
Mathematical Sciences	—
Physics and Informatics	Physics, Informatics
Chemistry	—
Biology	—
Geosphere Sciences	Regional Environmental Science, Environmental Materials Science

Characteristics of Educational Contents

Science contributes to the development of technology as well as to the creation of intellectual properties by exploring the structure and law of nature. Its role is becoming increasingly important in terms of creating a truly rich society where science and technology coexist with nature. The Faculty of Science consists of six fields of education and research which make up the framework of science: mathematics, physics, informatics, chemistry, biology and earth science.





Faculty of Medicine and Health Sciences



Specialized Fields

Departments	Courses
Medicine	Organ Anatomy and Nanomedicine, Neuroanatomy, Molecular and Cellular Physiology, Physiology, Systems Biochemistry in Pathology and Regeneration, Biochemistry and Molecular Biology, Pharmacology, Pathology, Molecular Pathology, Genomics and Molecular Analysis, Systems Bioinformatics, Public Health and Preventive Medicine, Legal Medicine, Immunology, Medical Education, Gastroenterology and Hepatology, Medicine and Clinical Science, Endocrinology, Metabolism, Hematological Sciences and Therapeutics, Neurology, Respiriology, Neuropsychiatry, Pediatrics, Surgery and Clinical Science, Gastroenterological, Breast and Endocrine Surgery, Orthopedic Surgery, Dermatology, Urology, Ophthalmology, Otolaryngology, Radiology, Radiation Oncology, Obstetrics and Gynecology, Anesthesiology, Neurosurgery, Oral and Maxillofacial Surgery, Oncology and Laboratory Medicine, Acute and General Medicine, Medical Informatics and Decision Sciences, Clinical Pharmacology
Health Sciences	Fundamental Nursing, Clinical Nursing, Maternal / Child Nursing, Community / Gerontological Nursing, Basic Laboratory Sciences, Clinical Laboratory Sciences

Characteristics of Educational Contents

Both the School of Medicine and the School of Health Sciences make use of an electronic syllabus (eYUME, FHS Web Campus). The School of Medicine incorporates an educational curriculum that corresponds to Objective Structured Clinical Examination (OSCE) and CBT, providing a comprehensive curriculum with basic medicine and clinical medicine, self-development program, Research Report Writing Unit and clinical clerkship. It thus aims to provide various undertakings.

The School of Health Sciences carries out a variety of initiatives to develop human resources that can be internationally active, based on a curriculum where students become eligible to sit for qualification exams for careers that include public health nurse, nurse, midwife, clinical laboratory technologist, cytoscreener, and functional food consultant. Medical and health sciences practice aim to cultivate human resources and students who acquire knowledge and skills at University Hospital and hospitals collaborating with the school. In addition, it trains medical professionals with broad perspectives.



Faculty of Engineering



Specialized Fields

Departments
Mechanical Engineering, Civil and Environmental Engineering, Applied Chemistry, Electrical and Electronic Engineering, Information Science and Engineering, Architectural Design and Engineering, Sustainable Environmental Engineering

Characteristics of Educational Contents

1. A freshmen's seminar is offered in order to encourage students' self-awareness as a college student and to help them set goals.
2. Wedge-shape education of liberal education and specialized education as well as ethical education for technicians are offered.
3. Core courses, basic specialized courses are incorporated in order to meet rapid technological innovations and environmental changes.
4. Practicums, labs and experiments are incorporated in order to help utilize basic knowledge and develop it into wisdom.
5. Small-size basic seminars, internship and graduate theses are implemented to help cultivate abilities to perfect problem solving skills.
6. In order to cultivate basic skills to meet the demands of the information society, students are required to have a laptop PC, information-related education is offered from the first year, and utilization of information processing devices is encouraged during the fourth year in their respective labs.
7. In order to cultivate global-mindedness, language education, communication skills and presentation skills training are provided.
8. In order to help students learn lesson materials sufficiently, course evaluation is done by students and teachers are evaluated through peer review, promoting class quality improvement and collaboration between courses.



Faculties



Faculty of Agriculture



Specialized Fields

Departments

Biological and Environmental Sciences
Biological Chemistry

Characteristics of Educational Contents

Agricultural science is an academic discipline which aims to realize a rich life for humanity by effectively utilizing biological resources such as micro-organisms, plants and animals and by co-existing with them.

The faculty of Agriculture at Yamaguchi University aims to provide advanced education for the preservation of the ecological environment, the development of bioresources, and the efficient production of safe foods that support the existence of humanity, to contribute to the growth of community and society through cutting-edge research, and to cultivate human resources that can be active in the international arena.

The faculty consists of the Department of Biological and Environmental Sciences addressing food production and environmental protection and the Department of Biological Chemistry addressing life science of microorganisms, plants and animals. Both departments provide a wide variety of lecture courses and student experiment programs at basic and applied levels. The department of Biological and Environmental Sciences also provides farm training courses in the experimental farm located on the campus.

The faculty is full of activities including forward-looking-and-advanced researches such as the development of thermotolerant microbial functions and new technologies for crop production in a plant factory, local industry-government-academia cooperation, and global academic exchange with foreign universities, especially with those in southeastern Asia. Through the experience and practice of these activities, the students can broaden and deepen their views on the potential of Agricultural Sciences and both regional and international issues.



Joint Faculty of Veterinary Medicine



Specialized Fields

Department

Courses

Veterinary
Medicine

Basic Veterinary Science, Pathogenetic and Preventive Veterinary Science, Clinical Veterinary Science

Characteristics of Educational Contents

The Joint Faculty of Veterinary Medicine leverages the distinctive characteristics of both Yamaguchi University and Kagoshima University to provide students at both universities with an education in the areas of veterinary medicine in which each university excels. In addition to distinctive, face-to-face lectures and practical training, students at both universities take the same specialized subject courses according to the same syllabus and time schedule through real-time, interactive classes using an intercampus network connecting the universities. This system cultivates a well-rounded education and a high level of humanity and morality to produce talented individuals that can contribute to local and international societies as veterinarians.

On 2019, the joint faculty acquired the “first in Asia” certification from European Association of Establishments for Veterinary Education (EAEVE), which evaluates quality of veterinary education. Our achievement will contribute to improvement and enrichment of veterinary education at all veterinary universities in Japan and lead the development of Asian veterinary education and expertise veterinarians in the trend of globalization of veterinary education.





Specialized Fields

Department

Literacy of Science and Technology, Communication, Design Science, Problem and Project Based Learning

Characteristics of Educational Contents

The Faculty of Global and Science Studies is the only faculty at Yamaguchi University which offers major subjects taught in English and courses in design science. Design science is a method “to create new structures, systems, and products, and to solve various problems related to the organization of modern society and businesses.” The curriculum has been planned for the study of that methodology.

In addition, problem-solving abilities will be fostered through the introduction of project-based, problem-solving research instead of a graduation thesis. Students will work in small teams with Japanese corporations, local government, and other organizations to discover actual, underlying problems in society. Students will plan their own projects and study practical methods to solve the problems they discover.



Graduate Schools



Graduate School of
Humanities



■ Specialized Fields

Program	Major	Research Areas
Master's Degree	Humanities	Philosophy, History, Sociology, Japanese, and Chinese Languages and Literature, European and American Languages and Literature

■ Characteristics of Research Contents

The Humanities major explores the idiosyncrasy and universality of cultures and languages in the world. There are five specialized research areas: Philosophy, History, Sociology, Japanese and Chinese Languages and Literature, European and American Languages and Literature.

Examples of foreign students' Master's theses:

1. Influences of Japanese popular cultures in Taiwan.
2. China-Japan relations in the 21st century : Overcoming and bringing to account the past and creating the future.
3. Usage of the "ni"-case and the "de"-case in the Japanese concept of space and time.
4. The Japanese yari-morai expressions: A comparison with Chinese.

A Master of Arts degree is conferred upon completion of the program. It also opens up the possibility of pursuing a Doctoral program in East Asian Studies.





■ Specialized Fields

Program	Divisions	Specialities
Master's Degree	Studies in School Clinical Psychology	Clinical Psychology in Schools
Professional Degree	Advanced Professional Practice in School Education	School Leadership and Management Practice in Education Induction and Professional Development for New Teachers Education for Children with Special Needs

■ Characteristics of Research Contents



The graduate school of education trains students to the highest standards. In order to do this, students analyze large amounts of information on various issues in the field of education and they conduct research into the educational needs of local and global communities. Their work is guided by highly qualified teachers in real educational settings. Students research a variety of topics relating to education, society and culture, at the local, regional, and global levels. All of these activities enable students to acquire all-round abilities within an actual educational environment.



Graduate Schools



Graduate School of
Economics



Specialized Fields

Degree Program	Major	Program
Master's Degree	Economics	Public Administration, Socio-Economic Policy
	Corporate Management	Medical-Welfare Management, Mountain-Area Management, Tax Service

Characteristics of Research Contents

The ethos of Self-Restoration made its debut on the international stage in 2002 with the launch of the Public Administration (PA) Program, sponsored in part by JICA. The PA Program, with its classes conducted entirely in English, is pivotal to the cultivation of global human resources in the school. The PA Program is offered in principle for the benefit of JICA sponsored international students, however, the flexible curriculum allows students from other programs to earn up to 13 credits in the PA Program. Moreover, since 2010, the program has been open to all.



Example of master's thesis titles by international students of PA Program:

- Involving Agent Banking through Union Digital Center: A New Dimension of Increasing Financial Inclusion in Rural Areas of Bangladesh
- Towards Efficient and Effective Public Financial Management System in Laos
- Reforming Performance Appraisal System: Selection of Appropriate Method for Nepalese Civil Service
- Modeling of International Tourism Demand to Cabo Verde
- Factors Impeding Females from Reaching Leadership Positions in the Private Sector of Japan





■ Specialized Fields

Programs	Divisions	Areas & Courses
Doctoral	Medicine	Human Science, Neuroscience, Clinical Neuroscience, Stress and Bio-response Medicine, Radiological and Pathological Science, Reproductive and Developmental Medicine, Epithelial Intelligent and Analytical Medicine Science, Biomedical and Biomolecular Sciences, Clinical and Biomedical Information Science, Department of Molecular Science and Applied Medicine, Bio-Signal Analysis, Medical Bioregulation, Environmental, Humanity and Health System Science
Doctoral I	Nursing and Laboratory Science	Nursing Science: Fundamental and Community Nursing, Clinical Nursing. Laboratory Science: Molecular Cell Biology, Analytical Cellular Informatics, Microbiological Informatics, Neuroscience and Biomedical Informatics, Analytical Genetic Informatics, Diagnostic Laboratory Informatics, Biomedical Informatics, Applied Pathogenetic Laboratory Science
Doctoral II	Nursing and Laboratory Science	Nursing Science: Community Health Nursing, Critical Care Nursing, Maternal / Child Developmental and Genetic Nursing. Laboratory Science: Applied Analytical Cellular Informatics, Analytical Pathological Informatics

■ Characteristics of Research Contents

- **Medicine:** The aim is to promote advanced and distinctive research and develop new medical technology and an advanced level of medical treatment. We foster medical professionals who respect intellectual property and have the ability to conduct translational research and develop their research into practical applications.
- **Nursing and Laboratory Science:** Nursing research spans a number of areas such as clinical, community, aged care, emergency nursing, genetic/genomic nursing, maternal health, and palliative care and is characterized by interdisciplinary collaboration and clinical partnerships. In the Laboratory Science, while learning bio-information analysis theory and skills, students research exploratory medical information analysis, cross-cultural health medicine, cellular information applied analysis, and disease information analysis.

Examples of research done by international students:

- 1) Jin H, et al. Telmisartan prevents hepatic fibrosis and enzyme-altered lesions in liver cirrhosis rat induced by a choline-deficient L-amino acid-defined diet. *Biochem Biophys Res Commun*, 2007 Dec 28; 364(4): 801-7.
- 2) Shen J, et al. Leptin enhances TNF- α production via p38 and JNK MAPK in LPS-stimulated Kupffer cells. *Life Sci*. 2005 Aug 12; 77(13): 1502-15.



Graduate Schools



Graduate School of Sciences and Technology for Innovation



Specialized Fields

Master's Degree Program

Divisions	Courses
Division of Yamaguchi University and Kasetsart University Joint Master's Degree Program in Agricultural and Life Sciences	Agricultural Science Course Life Science Course

Doctoral I Program

Divisions	Courses
Division of Fundamental Sciences	Mathematical Sciences Course Physics Course Informatics Course
Division of Earth Science, Biology, and Chemistry	Chemistry Course Biology Course Earth Sciences Course
Division of Mechanical Engineering	Biomedical Engineering Course Aerospace and Thermal Engineering Course Mechanosystems Design Engineering Course
Division of Construction and Environmental Engineering	Civil and Environmental Engineering Course Civil and Environmental Engineering International Course Environmental System Engineering Course Architecture Course

Doctoral I Program

Divisions	Courses
Division of Applied Chemistry	Materials Chemistry Course Bioengineering and Chemistry Engineering Course Environmental Chemistry and Chemical Engineering Course
Division of Electrical, Electronic and Information Engineering	Electronic Devices Engineering Course Electronic Systems Engineering Course Intelligent Systems and Media Engineering Course Information Systems Engineering Course
Division of Agricultural Sciences※	Agriculture Course Applied Bioscience Course

※Special Master course on agricultural sciences is available for international students. In the course, lectures are generally held in English language. To complete the course, the students are requested to complete lectures and thesis research according to their supervisors' suggestions.

Doctoral II Program

Divisions	Courses
Division of Natural Science	Mathematics, Physics and Informatics Course Chemistry and Earth Sciences Course
Division of Systems and Design Engineering	Electronic and Information Systems Engineering Course Mechanosystems Design Engineering Course Technology Management Course
Division of Environmental Engineering	Energy and Environmental Systems Course Civil Engineering and Architecture Course
Division of Materials Science and Engineering	Applied Physics Course Applied Chemistry Course
Division of Life Science	Biomedical Engineering Course Applied Molecular Bioscience Course Agricultural Sciences Course



■ Characteristics of Research Contents

Master's Degree Program

Divisions	
Division of Yamaguchi University and Kasetsart University Joint Master's Degree Program in Agricultural and Life Sciences	This division consists of two courses: Agricultural Science Course and Life Science Course, and conducts a joint curriculum with Kasetsart University in the Kingdom of Thailand. During the stay in Kasetsart University for a total of 4 months, students attend classes and conduct experiments, practical trainings and researches under the sub-supervisor. Research and development on tropical biological resources have potential to create new industries in the fields such as food, energy, medicine and the environment. In this program, we develop human resources who can understand and analyze such biological resources and explore new ways to utilize them. The Master degree is conferred jointly with Kasetsart University.

Graduate Schools

Doctoral I Program

Divisions	
Division of Fundamental Sciences	This division consists of three courses: the Mathematical Sciences Course, the Physics Course and the Informatics Course. Taking as its foundation the specialized knowledge pertaining to each course, the program responds to society's needs through systematic and practical education that examines the natural sciences and science and technology, and also natural science research in a wide range of fields.
Division of Earth Science, Biology, and Chemistry	There are three courses in this division: the Chemistry Course, the Biology Course and the Earth Sciences Course. Each course puts into practice research activities pertaining to its own specialized fields or its own interdisciplinary fields. Through research training at the very front line of science, the students acquire knowledge through which they will be able to play active roles as science experts such as researchers and technicians. Furthermore, there are curriculums through which the students acquire English skills and communication skills, and they are also able to hone abilities that will enable them to play active roles at an international level.
Division of Mechanical Engineering	This division covers, in an organic and comprehensive manner, the phenomena and events that are encountered when dealing not only with familiar machines, but also with an extensive range of mechanical systems. It aims to develop human resources who have more advanced knowledge and also the abilities (creativity) required to create machines that move, with a view to developing and designing state-of-the-art machines, on the basis of a mathematical and scientific understanding of the nature and functionalities that those familiar machines and mechanical systems inherently possess. In order to achieve this objective, three courses have been established in this division: the Biomedical Engineering Course, the Aerospace and Thermal Engineering Course and the Mechanosystems Design Engineering Course.
Division of Construction and Environmental Engineering	On the basis of the knowledge on civil and environmental engineering and architecture, this division aims to educate high-level expert professionals who work internationally by possessing the ability to find and solve issues, the skills of communication and presentation, and a broad range of specialized knowledge related to civil engineering, environmental systems engineering and architecture.
Division of Applied Chemistry	This division conducts research related to the development of organic/inorganic/polymer materials, pharmaceutical products, biomass, and energy/environmental materials, and to production technologies and evolution of functions pertaining to them, while taking into consideration the global environment and the natural environments of local communities, so that we can enjoy convenient and comfortable lives. The program covers a wide range of areas from the basics all the way to applications, encompassing materials chemistry, biochemistry, environmental chemistry and chemical engineering, and deploys the world's top-level basic scientific research in each field, and research through university-industry-government collaboration with chemistry/biology-related companies and public institutions and research through international collaboration. Amid demand for the regional revitalization, we will continue to transmit to the world manufacturing technologies that contribute to strengthening the scientific foundations of Japan.
Division of Electrical, Electronic and Information Engineering	Electricity has been used in daily life since the latter half of the 19th century, and has brought convenience and richness to our lives. As a result of unceasing technological innovation in this field, today, electricity, electronics and information have become indispensable areas of science and technology, as foundations for every aspect of modern industry and social life. This division covers a wide range of fields related to electricity that are essential for our lives today, such as energy, devices, electronics, computers, media and communication, and continues to develop while rapidly changing, as a richly creative technical field that will open up the way to the society of the future.
Division of Agricultural Sciences	This division consists of two courses: the Agriculture Course and the Applied Bioscience Course. It develops human resources who can play active roles as high-level researchers and technicians who possess a rich sense of humanity, by providing advanced specialized knowledge, techniques, presentation skills, skills for finding and solving issues, and skills for the creation of innovation related to a wide range of agricultural fields through study and practical research experience in each course, and also by honing English skills, communication skills, on-site response skills pertaining to local communities and industries, and international awareness, through searching and interpreting domestic and overseas research literature, internships, short-term dispatches to overseas universities, interacting with international students and foreign researchers, and more. In addition, in special programs, lectures are conducted in English.

Doctoral II Program

Divisions	
Division of Natural Science	<p>This division consists of five fields: mathematical sciences, physics, informatics, chemistry and Earth sciences. Taking as its foundation advanced study and research regarding leading-edge research and leading-edge technologies pertaining to each field, the program aims to foster independent researchers and high-level expert professionals who view natural sciences research in a wide range of fields from the perspective of coexistence between nature and humankind, and possess comprehensive research abilities through which they can find new problems and solve them proactively.</p>
Division of Systems and Design Engineering	<p>As technology has advanced, people have created engineering systems that will operate optimally in accordance with the value demanded by the society of the time. This division promotes research with regard to the construction and design of systems related to a wide range of fields, such as mechanical engineering, electrical and electronic engineering, and information communication engineering. It will continue to develop more and more as a field for achieving a society in which the burden on the environment is light and activities are conducted efficiently with regard to limited resources, and a people-friendly society that provides safety and peace of mind.</p>
Division of Environmental Engineering	<p>Our aim is to achieve a safe, secure, and sustainable society and to make a contribution to international green innovation. In order to achieve these goals, we are developing human resources who possess a firm understanding of the knowledge, skills, and technology required for the construction of comfortable and environmentally friendly spaces in a variety of settings. These include cities of varying sizes, local communities, families, and individuals.</p>
Division of Materials Science and Engineering	<p>Taking as its foundation basic sciences such as physics and chemistry, this division covers a wide range of areas related to materials science, such as the creation of new substances and materials, research into material properties, research into applications to (for example) various devices, and computer science, and conducts research and development that leads to technological innovation from the perspectives of substances and materials. The research targets a wide variety of areas, concrete examples of which include semiconductor materials, magnetic materials, thermoelectric conversion materials, superconducting materials, organic electronics materials, materials for fuel cells, and separation membrane materials. Furthermore, it will continue to develop, aiming to achieve research and development that will be useful for society through collaboration with the industrial world.</p>
Division of Life Science	<p>Life science is a field of study that addresses the basic principles of life, from microorganisms, plants, and animals to human beings, and develops applications that are directly related to the lives of humans, such as medicine, food and agriculture. Because of the far-reaching and critically important applications of this field there is a tremendous social need to develop high-level expert engineers and researchers who can ensure its continuous advancement. Through extensive and coordinated collaboration between the natural sciences, agriculture, medicine, and engineering fields, this division develops researchers and high-level professionals who possess advanced expertise and comprehensive perspectives, and who can contribute effectively to academic research. Furthermore, the division offers special programs for international students in which lectures are given in English either in part or wholly.</p>

Graduate Schools



Graduate School of
East Asian Studies



■ Specialized Fields

Program	Major	Courses
Doctoral II	East Asian Studies	Asian Comparative Culture Course, Asian Economy, Management and Law Course, Asian Education Course

■ Characteristics of Research Contents

The capacity limit for the program is 10 students. Students choose one specialty from East Asian comparative culture, East Asian economy, business administration and law, East Asian educational development, receiving guidance from a team of faculty members in their chosen research topic. The School provides support to students' research and life in general by actively adopting them as research associates. The system of multiple mentors helps students to complete their dissertations.

Examples of international students' dissertations:

- A comparative study of Chinese and Japanese welfare community formation.
- A comparative study of school refusal and free schools in Taiwan and Japan.
- A study of the environmental protection act in the minority areas in Guizhou, China.
- Political economic analysis of economic partnership agreements within Japanese foreign policy making.





Graduate School of

Innovation and Technology Management



■ Specialized Fields

Program	Major
Professional Degree	Innovation and Technology Management

■ Characteristics of Research Contents

- ① To collect and analyze a wide range of Management of Technology (MOT)-related cases to develop a firm foundation for practical MOT as an intellectual center.
- ② To assume a leading role in MOT research as an integrative discipline by promoting basic and advanced research at the international level, and leveraging this research for application in the fields of science, technology and corporate business administration.
- ③ To realize continuous innovations at the community level by proposing on-going solutions and management methods for practical issues in industry, while also actively seeking collaboration with external institutions.



Graduate Schools



Specialized Fields

Program	Major	Chairs
Doctoral	Veterinary Medicine	Basic Veterinary Science Pathogenetic and Preventive Veterinary Science Clinical Veterinary Science

Characteristics of Research Contents

The Joint Graduate School of Veterinary Medicine was established in April 2018 in cooperation with Kagoshima University for promoting advanced veterinary research and training veterinary researchers with a sufficient ethical perspective on life and research, as well as veterinary specialists who contribute to solving social problems in the local communities and around the world. The Joint Graduate School focuses on postgraduate education programs that meet international accreditation standards, enhancing education in English, and promoting the acceptance of international students. The Joint Graduate School offers two distinctive educational courses that meet the social needs.

Veterinary Science Course: This program is designed to train researchers who can play a role in the international accreditation standards for veterinary education through advanced research.

Veterinary Specialist Course: This program is designed to train advanced veterinary specialists in fields including laboratory animal medicine and veterinary pathology, as well as leading veterinary clinicians who can provide advanced veterinary medicine.





■ Specialized Fields

Doctoral Program

Course	Divisions	Course	Divisions
Bioproduction and Bioenvironmental Sciences	Agricultural Production Science	Bioresource and Life Sciences	Fungus and Mushroom Sciences
	Managerial Economics		Bioscience and Biotechnology
	Forest and Watershed Environmental Sciences		Applied Bioresource Chemistry
	Environmental Bioscience	Global Dryland Science	Global Dryland Science

■ Characteristics of the doctoral course

1. The UGSAS is operated by the highly qualified academic staffs of the participating Universities, Tottori, Shimane, Yamaguchi and Japan International Research Center for Agricultural Sciences (JIRCAS).
2. Each student is supervised by three Faculty members: one major supervisor and two associate supervisors. Although all students are registered as students of Tottori University, but their coursework is mainly conducted in the graduate school of the major supervisor. The students are able to use the facilities and equipment of the other two universities.
3. In order to attain a doctoral degree, the student is required to have two or more papers published in journals issued by professional societies.
4. Based on the concept for establishment of the UGSAS, the students should take Core Subjects to pick up general knowledge of agricultural sciences and deep knowledge in fields related to own discipline. The Core Subject consists of (1) Comprehensive Agricultural Science, (2) Advanced Subjects on each three doctoral Courses and (3) Academic Communication Science.

■ Admissions

- Directions for Application for The Special Program of foreign students for admission -Pre-arrival Admission-
- Directions for Application for The Special Program for Bioresource Utilization Science of Fungus and Mushroom
- Directions for Application for The Special Program for Dryland Agricultural Science with Reference to SDGs



Student Life

Lets Start



University Calendar

■ First Semester	April 1 ~ September 30
■ Summer Vacation	Begining of August ~ End of September
■ Second Semester	October 1 ~ March 31
■ Spring Vacation	Middle of February ~ End of March

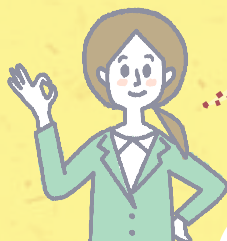


Tuition & Fees

As of May 1, 2022

Degree Students	Matriculation Fees	Tuitions (half year)	Tuitions (year)	Non-Degree Students	Matriculation Fees	Tuitions
Undergraduate	282,000 yen	267,900 yen	535,800 yen	Research Students	84,600 yen	29,700 yen/month
graduate	282,000 yen	267,900 yen	535,800 yen	Students by Course	28,200 yen	14,800 yen/credit

Alright



CHECK

Tuition Waiver

A tuition waiver is available upon students' request and after screening. Graduate students with outstanding academic records who are officially considered to have difficulty making tuition payments due to economic reasons can apply for a tuition waiver (half or full) and matriculation fee waiver (half).



Scholarships

There are a number of scholarships; here, the main ones are listed.

Scholarships	Monthly amounts	Eligible Applicants	Number of Students	Length of Period
Yamaguchi University Scholarships for Privately Financed International Students (Provided by Yamaguchi University Fund and Yamaguchi University)	45,000 yen	Graduate students and Undergraduate students	About 20	12 months
Japanese government (MEXT) scholarship	143,000 ~ 145,000 yen	Graduate students	Several	Until graduation
	117,000 yen	Undergraduate students	Several	
Monbukagakusho Honors Scholarship for Privately Financed International Students	48,000 yen	Degree students and research students	Several	12 months



Yamaguchi University Fund

The Yamaguchi University Fund is the university's own fund for supporting students. Foreign students studying at the university at their own expense are given a grant-type scholarship of 45,000 yen per month for one year. (See "Scholarships.")



While enrolled, the following types of support are also available.

- Research project support (doctoral program) : 1 scholarship, up to 200,000 yen
 - "Omoshiro Project": 1 scholarship, up to 500,000 yen
- This project provides financial support to students to realize independent and creative plans.
- "YU Student Idea Contest": Prize of up to 70,000 yen

This contest offers an opportunity to implement ideas that lead to addressing SDGs or other societal issues.



Living Expenses

Below are rough estimates of living expenses in the Yamaguchi and Ube areas. It is relatively inexpensive compared with living in larger cities.



Part-Time Jobs

International students interested in working part-time are required to obtain permission in the form of an official work permit. Once you get the permission, you can work up to 28 hours a week.

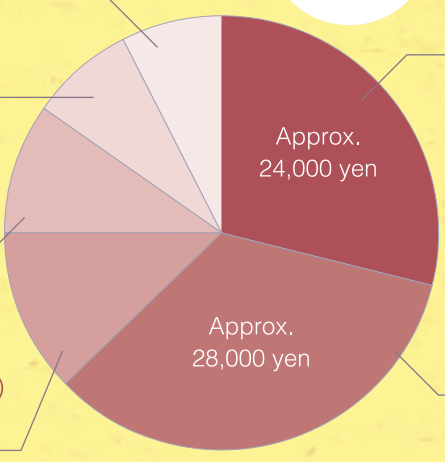


Others
(entertainment, etc.)
Approx. 6,000 yen

Learning materials
Approx. 6,500 yen

Communications
(telephone, Internet)
Approx. 8,000 yen

Utilities
(gas, electricity, water)
Approx. 10,000 yen



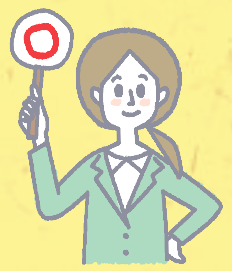
Rent

Food



O.K.

CHECK



Student Life



Accommodation



Yamaguchi International House (No.1)



Yamaguchi International House (No.2)



International House

Yamaguchi University currently has two International Houses in Yoshida and Tokiwa campuses as accommodation for international students and researchers. Since there is a capacity limit, the International Student Center does screening.



International House

As of May 1, 2022

	Buildings	Types of Rooms	Number of Rooms	Monthly Rents	Deposit (cleaning fee) upon moving in
Yamaguchi International House (Yoshida)	No. 1	Single	36	11,200 yen	19,000 yen
		Couple	4	17,900 yen	29,000 yen
		Family	3	26,800 yen	37,000 yen
	No. 2	Single A	16	16,200 yen	19,000 yen
		Single B	9	19,200 yen	19,000 yen
Single C		3	20,000 yen	19,000 yen	
Ube International House (Tokiwa)	Singles	Single	33	11,200 yen	25,000 yen
		Couple	6	17,900 yen	35,000 yen
		Family	8	26,800 yen	45,000 yen

Private Apartments

The table on the right is a rough estimate of costs when you live in apartments in Yamaguchi and Ube areas. There are a number of private apartments near Yamaguchi University. When you rent an apartment in Japan, you will need to pay, in addition to monthly rents, a deposit, key money, and a handling fee. Although exact amounts may vary, you should expect to pay an equivalent of 4 months rent when you sign a lease agreement.

Private Apartments

Area	Facilities	Monthly rents
Approx. 10㎡	Partially shared bath and toilets	12,000 ~ 35,000 yen
Approx. 10㎡・K	Separate baths, toilets & kitchens	25,000 ~ 40,000 yen
11~13㎡・K	Separate baths, toilets & kitchens	35,000 ~ 50,000 yen
13~20㎡・K	Separate baths, toilets & kitchens	43,000 ~ 65,000 yen





YU International Share House (Exchange student dormitory)



YU International Share House was newly established for exchange students of the Faculty of Global and Science Studies. We do have several on-campus dormitories for international students in Yoshida campus and Tokiwa campus, but this new dormitory was added to further increase our accommodations capacity for international students. The YU International Share House has 31 flats, each shared by three students, meaning it can accommodate a total of 93 students. All flats come with air-conditioning, the common area in each flat is equipped with home appliances, and each bedroom is furnished with a desk and bed.



Capacity	31Units, 93 Students
Rent (per month)	19,000 yen
Utility Fees (including internet access)	10,000 yen
Cleaning Fee (upon moving in)	19,000 yen



ARIGATOU



Japanese Language Education

Yamaguchi University provides Japanese language education for international students in small-size classes from the beginning to advanced levels. There are also cultural classes on flower arrangement, tea ceremony and calligraphy.



LEVEL UP



Career Support

The Career Support and International Student Center activity assists international students to find job opportunity in Japan.



Student Special Support Room



The Student Special Support Room is an office to support the study of students with disabilities. Staff counseling to students who have difficulty in studying, and coordinating support in collaboration with their faculties and faculty members in charge of classes.

The Student Special Support Room provides information about the support system for students with disabilities at Yamaguchi University. For special measures for entrance examinations, please contact with the faculty you wish to enroll in.

Student Life



Cafeterias



At Yamaguchi University, there are three cafeterias on Yoshida Campus, and one each on Kogushi and Tokiwa Campuses. They are always packed with students during meal times. The cafeterias run by the Yamaguchi University Co-op devise enjoyable meals throughout the year by creating seasonal menus such as the Christmas Fair, and regional menus, for example the Chugoku-Shikoku Fair, and the Hokkaido Fair, six times a year. Furthermore, calorie count and salt content are displayed on the receipt as a reference to aid health management. The cafeterias run by the School Welfare Association sell freshly baked bread and offer a wide variety of desserts. With their extensive menus and reasonable prices, each cafeteria supports students' everyday life from breakfast through to dinner.



List of cafeterias

No.1 cafeteria: Bouno	572seats (Yoshida Campus)
No.2 cafeteria: Kirara	447seats (Yoshida Campus)
No.3 FAVO cafe	170seats (Yoshida Campus)
Faculty of Medicine and Health Science, Welfare Facility: Ishinkan	200seats (Kogushi Campus)
Faculty of Engineering, Welfare Facility	388seats (Tokiwa Campus)

CHECK

Halal food

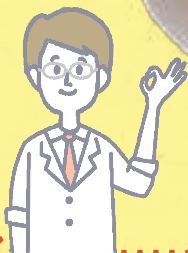


Student cafeteria No.1 "Bouno" on Yoshida Campus and another cafeteria on Tokiwa Campus offer a Halal Food menu. Halal food means meals in which everything from the ingredients to the preparation methods are permitted by Islamic law, and their introduction has become a reality through a process that has included discussions with Muslim international students, tasting events, and confirming the preparation methods.



Halal food menu

O.K.



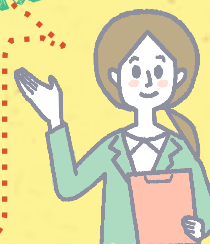
Chicken Yellow Curry
Green Curry
Matsaman Curry
Panang Curry

¥108

Halal chicken Baking



GREAT





Library



As a facility that supports education and research, the library is an essential place for university study. First year students use the General Library in Yoshida Campus in Yamaguchi City, while in their second year, students of the Faculty of Medicine and Health Science and the Faculty of Engineering use the libraries in either Kogushi Campus or Tokiwa Campus in Ube City.



General Library

General Library opening hours

	Semester	Intersessions
Weekdays	8:30 to 21:30	8:30 to 17:00
Sat. / Sun. / National Holiday	10:30 to 19:00	Closed



Medical Library



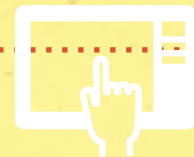
Engineering Library

Altogether, there are 1.6 million books and 30,000 journals in the three libraries.

You can search for books on the website.



Introduction to the General Library



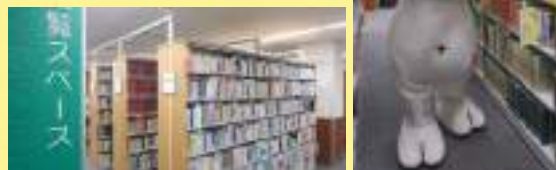
Academic Forest

A space where you can talk and study in small groups. You can note down ideas on the full wall whiteboard to stimulate debate, which makes the space ideal for problem-solving study.



Bookshelves

The collection's wide range of genres will lead you to new worlds. Get closer to books, and expand your horizons through new discoveries.



Computer Laboratory

Computer Laboratory is equipped with computers. This is the best place for study that requires research using the network.



Counter

Student assistants, as well as the actual library staff, are on hand to help you. Should you have any questions about how to use the library or search for materials, please don't hesitate to ask.



Yoshida Campus

Yoshida Campus, located in Yamaguchi City, is the main campus of Yamaguchi University and home to seven faculties. Students can enjoy fulfilling campus life in a comfortable environment with well-organized research facilities and areas for relaxation and refreshment established on the spacious and nature-rich grounds.

Tokiwa Campus

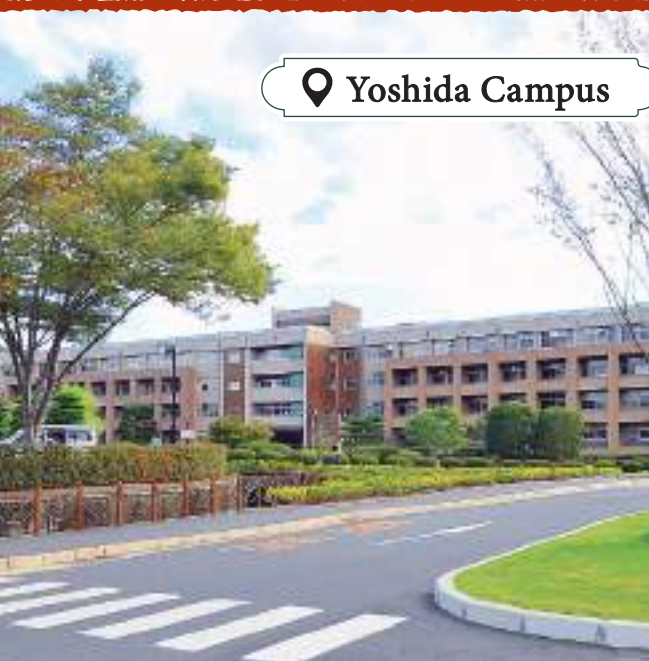
Tokiwa Campus, located near Tokiwa Park, a well-known sight of Ube City, is a place where not only basic research but also the world's cutting-edge research is conducted. Also on the premises are the Organization for Research Initiatives and facilities such as the Center for Design and Product Innovation, which are vigorously engaged in collaborative research with industry partners and regional contribution activities.

Kogushi Campus

Kogushi Campus enjoys a favorable environment, located in central Ube City and adjacent to waterfront parks which show different scenery in each season. Students of the Faculty of Medicine and Health Sciences will spend their first year on Yoshida Campus, and then move to this campus to spend their remaining years. The University Hospital on the same premises plays a central role as a venue for clinical training.

International Student Center

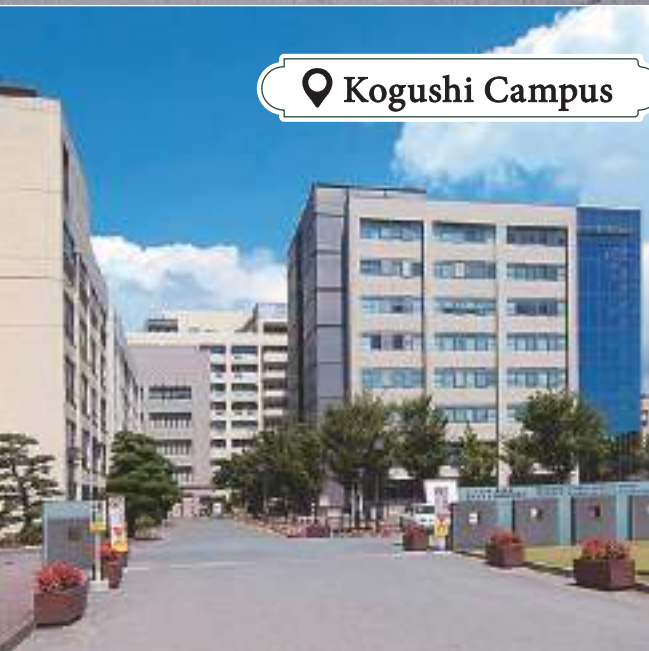
📍 Yoshida Campus



📍 Tokiwa Campus



📍 Kogushi Campus



■ One-stop Service Center for International Students

Yamaguchi University has set up the International Student Center as a one-stop service center for international students and Japanese students wishing to study abroad.

The following assistance is provided at the Center for comprehensive support and promotion of inbound and outbound students with the goal of fostering human resources capable of being active in international society.

1. Setting-up of an environment that enables international students to study and research at the university and live comfortably in Yamaguchi.

2. Providing language/culture support for international students including Japanese language and cultural education and assistance with everyday living matters.

3. Promoting and comprehensively supporting Japanese students wishing to study abroad.

4. Providing guidance in practical foreign language and cross-cultural understanding to help University students become active in international society.

For more information, go to the International Student Center website.

🔍 <http://www.isc.yamaguchi-u.ac.jp/>

Entrance Exam

The examination schedule for international students is below.
Details are available at the International Students Website :

<https://www.yamaguchi-u.ac.jp/english/admission/index.html>

Exams in Japan

Divisions		Department	Entrance	Application accepted
Undergraduate Faculties		Humanities, Education, Science, Medicine and Health Sciences, Agriculture, Joint Veterinary Medicine	April	Late January
Graduate School	Master's Degree	Humanities	April	September
		Education	April	Late September
		Economics	October	Early June
	Doctoral I	Graduate School of Sciences and Technology for Innovation (Agriculture)	April	Late September early October Early January
			October	Late June to Early July
		Graduate School of Sciences and Technology for Innovation (Science)	April	Late June to Early July Middle December
			October	Late June to Early July
		Graduate School of Sciences and Technology for Innovation (Engineering)	April	Early July Middle November
			October	Late June to Early July
	Doctoral II	Medicine (Nursing and Laboratory Science majors)	April	Middle July
		Medicine (Nursing and Laboratory Science majors)	April	Middle July
	Doctoral	Medicine	October	Early June
			April	Early January
		Joint Veterinary Medicine	October	Middle July
April			Middle July, Middle December	
Joint Veterinary Medicine	October	Early August		
	April	Early August Middle January		

Exams that can be taken outside Japan (Pre-arrival Exam)

Divisions		Department	Entrance	Application accepted
Undergraduate Faculties		Economics *1 Engineering *1	April	Late August
Graduate School	Master's Degree	Innovation and Technology Management	October	Late April to Early May
	Doctoral I	Graduate School of Sciences and Technology for Innovation (Engineering)	October	Middle May
			April	Middle November
	Doctoral II	Graduate School of Sciences and Technology for Innovation (Agriculture)	October	Middle May
			April	Early November
		Graduate School of Sciences and Technology for Innovation (Science)	October	Middle May
			April	Middle November
	Graduate School of Sciences and Technology for Innovation (Engineering)	October	Middle May	
		April	Middle November	
	Doctoral	East Asian Studies	October	Early April
April			Early October	
Joint Veterinary Medicine		October	Early August	
		April	Early August Middle January	

*1 :Selection of applicants will be based on results of the EJU and transcript *2 :Doctoral II United Graduate School of Agricultural Science, Tottori University : Inquire to the office in Tottori University P30 about more information

Inquiries

	Graduate School of Humanities Faculty of Humanities	1677-1 Yoshida, Yamaguchi City, Yamaguchi, 753-8540 +81-(0)83-933-5209 h-gakumu@yamaguchi-u.ac.jp
	Graduate School of Education Faculty of Education	1677-1 Yoshida, Yamaguchi City, Yamaguchi, 753-8513 +81-(0)83-933-5307 info-g@yamaguchi-u.ac.jp
	Graduate School of Economics	1677-1 Yoshida, Yamaguchi City, Yamaguchi, 753-8514 +81-(0)83-933-5597 ec191@yamaguchi-u.ac.jp
	Faculty of Economics	1677-1 Yoshida, Yamaguchi City, Yamaguchi, 753-8514 +81-(0)83-933-5506 ecgakumu@yamaguchi-u.ac.jp
	Graduate School of Medicine	1-1 Minami-Kogushi 1-chome, Ube City, Yamaguchi, 755-8505 +81-(0)836-22-2058 me233@yamaguchi-u.ac.jp
	Faculty of Medicine and Health Sciences	1-1 Minami-Kogushi 1-chome, Ube City, Yamaguchi, 755-8505 School of Medicine +81-(0)836-22-2053 me232@yamaguchi-u.ac.jp School of Health Sciences +81-(0)836-22-2134 me238@yamaguchi-u.ac.jp
	Graduate School of Sciences and Technology for Innovation (Science) Faculty of Science	1677-1 Yoshida, Yamaguchi City, Yamaguchi, 753-8512 +81-(0)83-933-5210 hc135@yamaguchi-u.ac.jp
	Graduate School of Sciences and Technology for Innovation (Engineering) Faculty of Engineering	16-1 Tokiwadai 2-chome, Ube City, Yamaguchi, 755-8611 +81-(0)836-85-9009 en304@yamaguchi-u.ac.jp
	Graduate School of Sciences and Technology for Innovation (Agriculture) Faculty of Agriculture United Graduate School of Agricultural Sciences, Tottori University	1677-1 Yoshida, Yamaguchi City, Yamaguchi, 753-8515 +81-(0)83-933-5811 aggakmu@yamaguchi-u.ac.jp
	Graduate School of East Asian Studies	1677-1 Yoshida, Yamaguchi City, Yamaguchi, 753-8514 +81-(0)83-933-5597 eastasia@yamaguchi-u.ac.jp
	Graduate School of Innovation and Technology Management	16-1 Tokiwadai 2-chome, Ube City, Yamaguchi, 755-8611 +81-(0)836-85-9876 mot@yamaguchi-u.ac.jp
	Joint Graduate School of Veterinary Medicine	1677-1 Yoshida, Yamaguchi City, Yamaguchi, 753-8515 +81-(0)83-933-5937 ve106@yamaguchi-u.ac.jp
	Joint Faculty of Veterinary Medicine	1677-1 Yoshida, Yamaguchi City, Yamaguchi, 753-8515 +81-(0)83-933-5808 vegakumu@yamaguchi-u.ac.jp
	Faculty of Global and Science Studies	1677-1 Yoshida, Yamaguchi City, Yamaguchi, 753-8541 +81-(0)83-933-5288 glgakumu@yamaguchi-u.ac.jp
	International Student Center	1677-1 Yoshida, Yamaguchi City, Yamaguchi, 753-8511 +81-(0)83-933-5982 ga142@yamaguchi-u.ac.jp




Map & Location

Transportation Access to Yamaguchi


from TOKYO

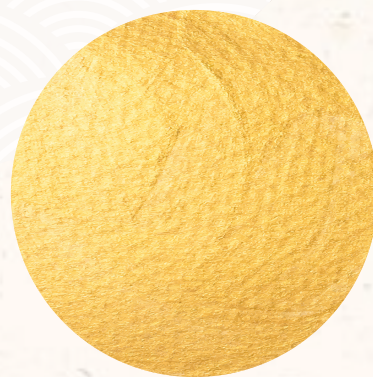
-  Shinkansen Tokyo → Shin-Yamaguchi 4 hrs. 30 min.
-  Airplane Tokyo international Airport → Yamaguchi Ube Airport 1 hr. 30 min.

from OSAKA

-  Shinkansen Shin-Osaka → Shin-Yamaguchi 2 hrs.

from FUKUOKA

-  Shinkansen Hakata → Shin-Yamaguchi 40 min.



Visit Our Website for Further Information

<https://www.yamaguchi-u.ac.jp/english/>

